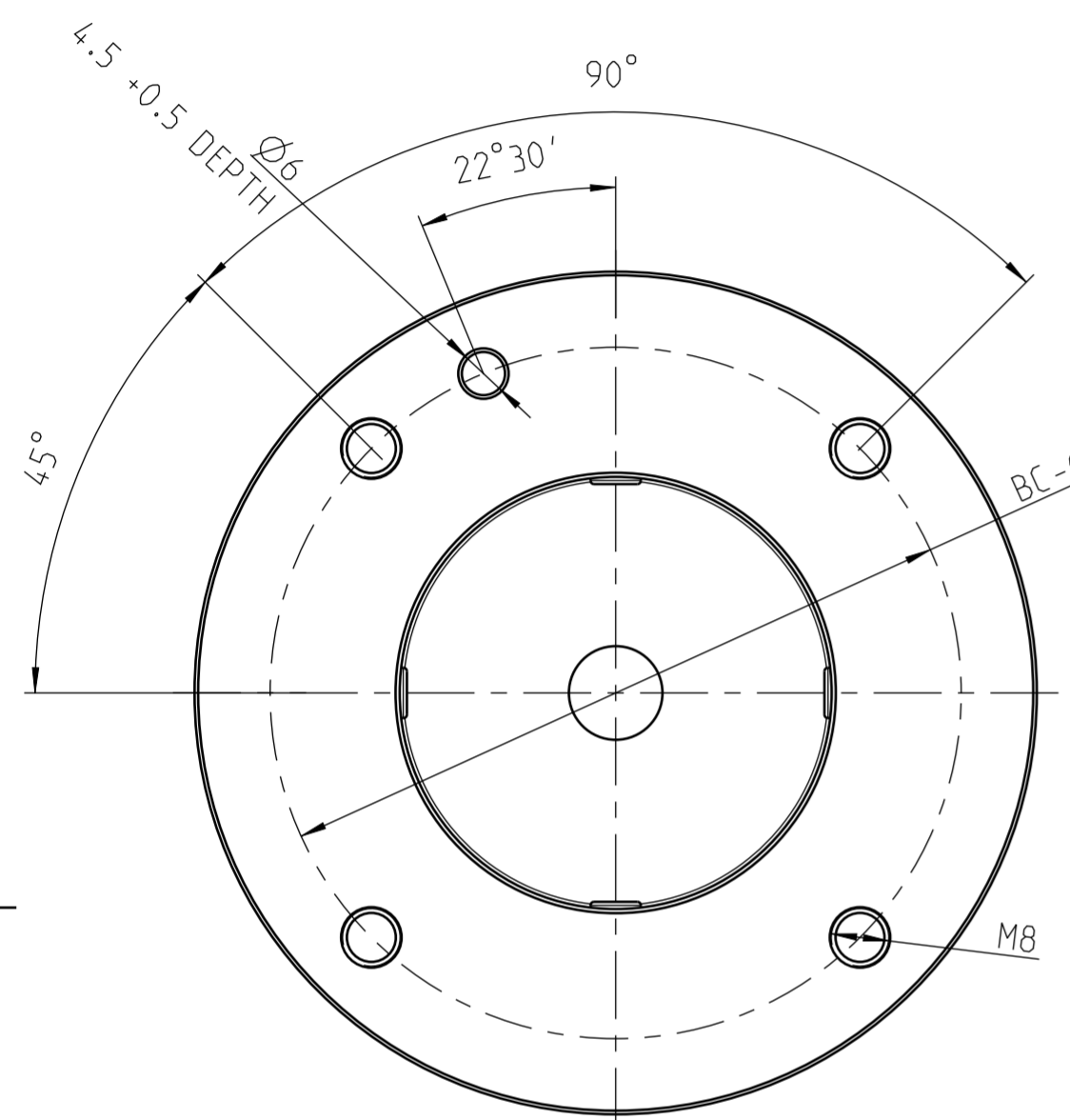
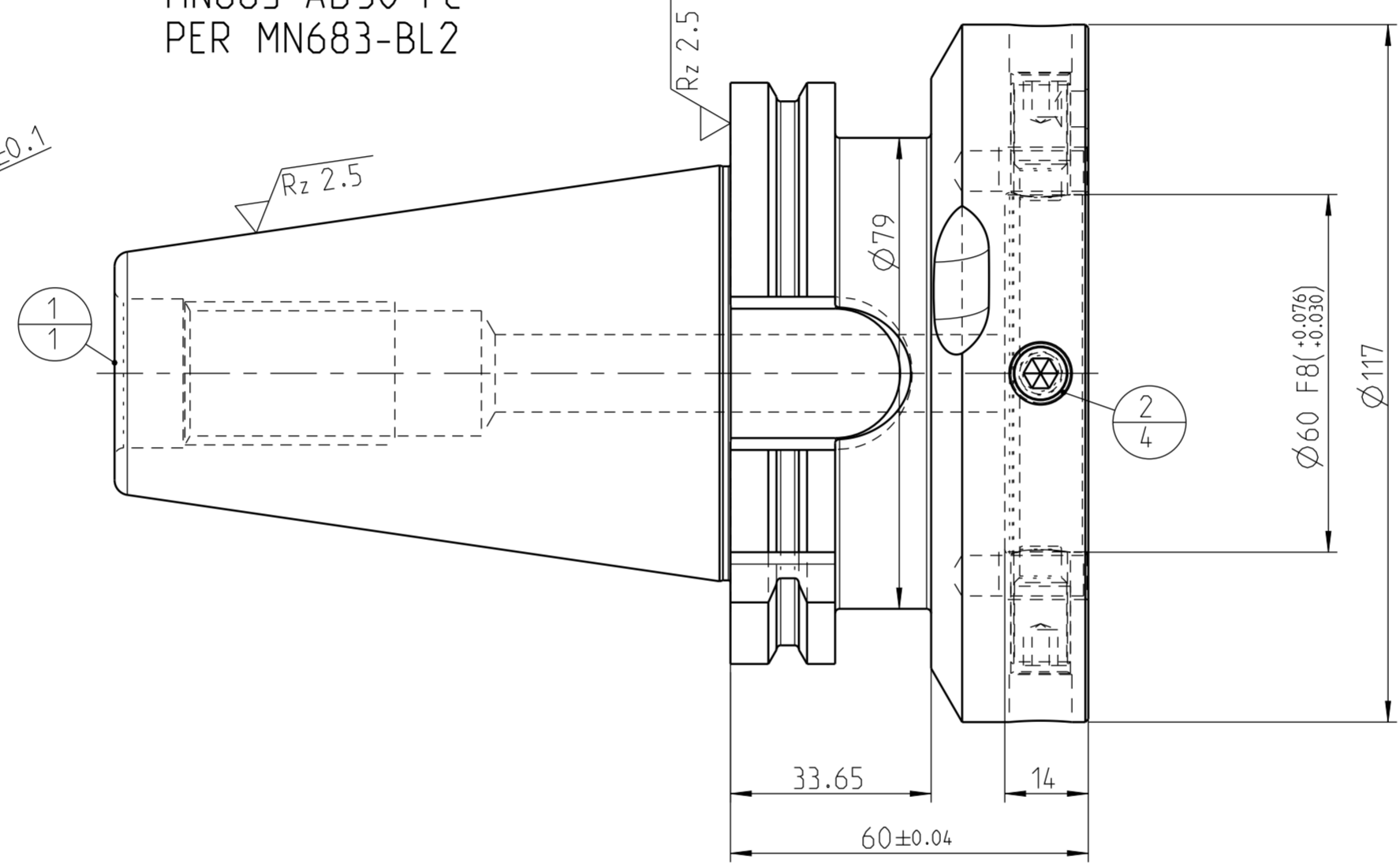


SPARE PARTS	ALLOCATION OF PARTS	INDEX NO.	CHANGES	DATE	NAME

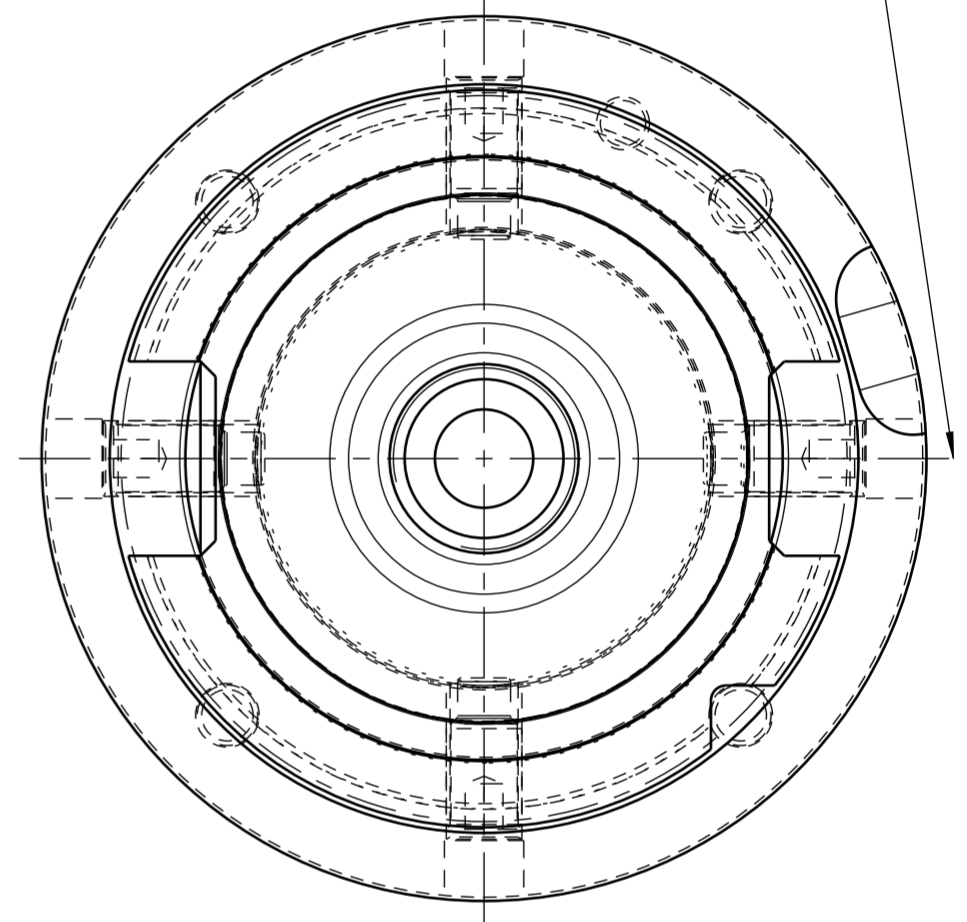


MN683-AD50-FC
PER MN683-BL2



MODULE 117
MN5000-14

POSITION OF CUTTING EDGE
FOR TOOL WITH SINGLE CUTTING EDGE



CUSTOMER: _____
SIMILAR: _____
JOB-NO.: _____
PROJECT-NO.: _____
SKETCH: _____
BARCODE-ZONE: _____

$\sqrt{Rz 25}$ ($\sqrt{Rz 6.3}$ $\sqrt{Rz 2.5}$)
CASE HARDENED HRC 60 ±2
DEPTH OF CASEHARDENING 0.8
THREAD SOFT

MACH.-NO.:	STATION:	SPINDLE:
PART-NAME:		
PART-NO.:		
MATERIAL:		
TOOL-NO.:	OP-NO.:	HOLE-NO.:

2	4	10075099	THREADED PIN	S.ISO 4028-M10X1X20-45H-KLF					
1	1		BODY						
PART	TYP	QUAN.	UT	MATERIAL NUMBER	DESCRIPTION	TECHNICAL SPECIFICATION	CUSTOMER NUMBER		
BALANCE GRADE DIN ISO 1940-G 6.3 (COMPLETE ASSEMBLY) AT 3000 MIN ⁻¹				THIS DRAWING REMAINS OUR EXCLUSIVE PROPERTY. IT IS ENTRUSTED ONLY FOR THE PURPOSE AGREED UPON AND MAY NOT BE USED FOR ANY OTHER PURPOSE. COPIES OR OTHER REPRODUCTIONS MAY ONLY BE MADE FOR THE PURPOSE AGREED UPON. NEITHER ORIGINALS NOR REPRODUCTIONS MAY BE TRANSMITTED OR OTHERWISE MADE ACCESSIBLE TO A THIRD PARTY WITHOUT OUR WRITTEN CONSENT.		MAPAL Präzisionswerkzeuge Dr. Kress KG	DATE	NAME	
ADDITIONALLY TO VA-NO. 07.05.01 MARK WITH:				DIMENSIONAL TOLERANCES PER ISO 2768-F UNLESS OTHERWISE SPECIFIED			REGISTERED WITH GERMAN AND FOREIGN PATENT OFFICES		
				DIMENSIONS NOT SHOWN ARE MAPAL STANDARDS		SCALE: 1:1		A2	
				TITLE: STEEP TAPER ADAPTOR, FORM AD. WITH CONTACT FACE		ORIGIN AA1			
				TECHNICAL SPECIFICATION: OS-AD-AD-FC050-MOD117-060-11		MATERIAL NUMBER: 30630804		DRAWING NO.:	INDEX
				REPLACES DWG. NO.:		REPLACED BY DWG. NO.:		606355623-001-00-ED1	00
								SHEET 1 OF 1 SHEETS	