

1 2 3 4 5 6 7 8

A

B

C

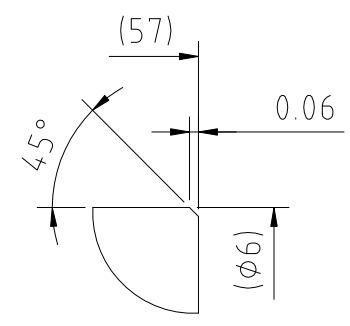
D





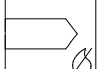
E

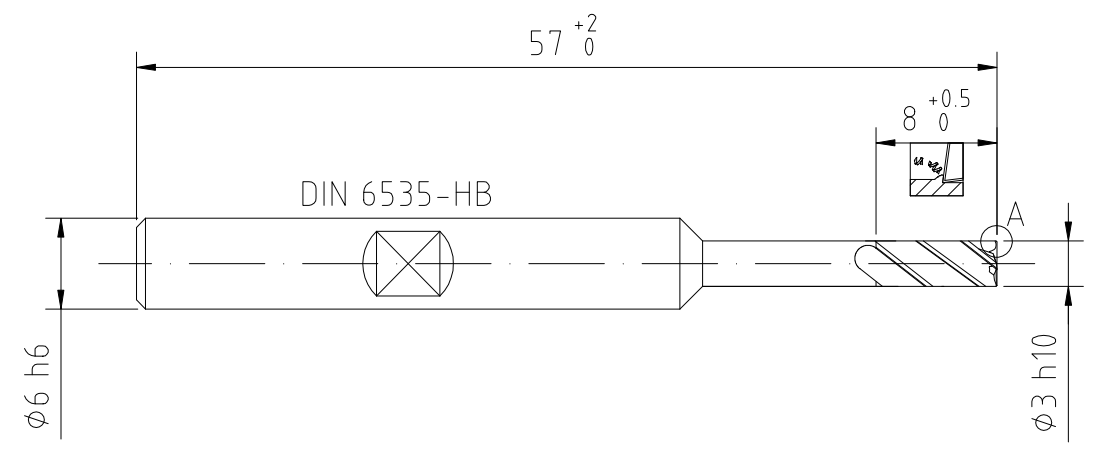
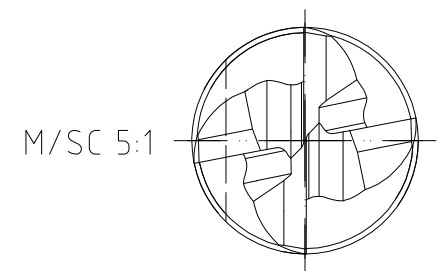
F

INDEX	CHANGES	DATE	NAME

DETAIL A  
M/SC 20:1



-  OPTIMILL-INOX-HPC
-  ~38.5° HELICAL AT φ3
-  CUT MAT HP921
-  MAT SEE CATALOG
-  WITHOUT I.C.



MAPAL ©  
FABRIK FUER PRAEZISIONSWERKZEUGE DR. KRESS KG

TITLE  
OPTIMILL-INOX-HPC, SHANKFORM HB, COATED

FORMAT  
A3

ALL RIGHTS FOR THE INVENTIONS, KNOW-HOW, TECHNICAL SOLUTIONS AND DESIGNS SHOWN ON THE DRAWING ARE ENTITLED TO MAPAL ONLY. AS FAR AS MAPAL DID NOT REGISTER PROPERTY RIGHTS HEREUPON YET, MAPAL FORMALLY RESERVES THE RIGHT FOR THE REGISTRATION OF PROPERTY RIGHTS. THE DRAWING AS WELL AS THE MATTERS SHOWN ARE STRICTLY CONFIDENTIAL. REPRODUCTIONS MAY ONLY BE MADE FOR THE PURPOSE AGREED UPON. NEITHER THIS DRAWING NOR COPIES THEREOF MAY BE MADE ACCESSIBLE TO THIRD PARTIES. WITH THE DELIVERY OF THIS DRAWING NO RIGHT TO USE IT FOR ANY PURPOSE IS GRANTED. VIOLATIONS AGAINST THE OBLIGATIONS TO SECRECY AND USE RESTRICTIONS WILL BE PROSECUTED.



**MAPAL**  
Präzisionswerkzeuge  
Dr. Kress KG

DATE OF ISSUE 2022-02-03	CREATED KSA	DOCUMENT 607669328-000-00-ED1	INDEX 00
DATE	APPROVED	MATERIAL NUMBER 31181468	ORIGIN ALD
GENERAL TOLERANCE ISO 2768-mH SIZE ISO 14405-1 Ⓔ	DIMENSIONS NOT SHOWN ARE MAPAL STANDARDS	SCALE 2:1	TECHNICAL SPECIFICATION SCM108-0300Z04R-F0006HB-HP921
			SHEET 1/1

1 2 3 4 5 6 7 8