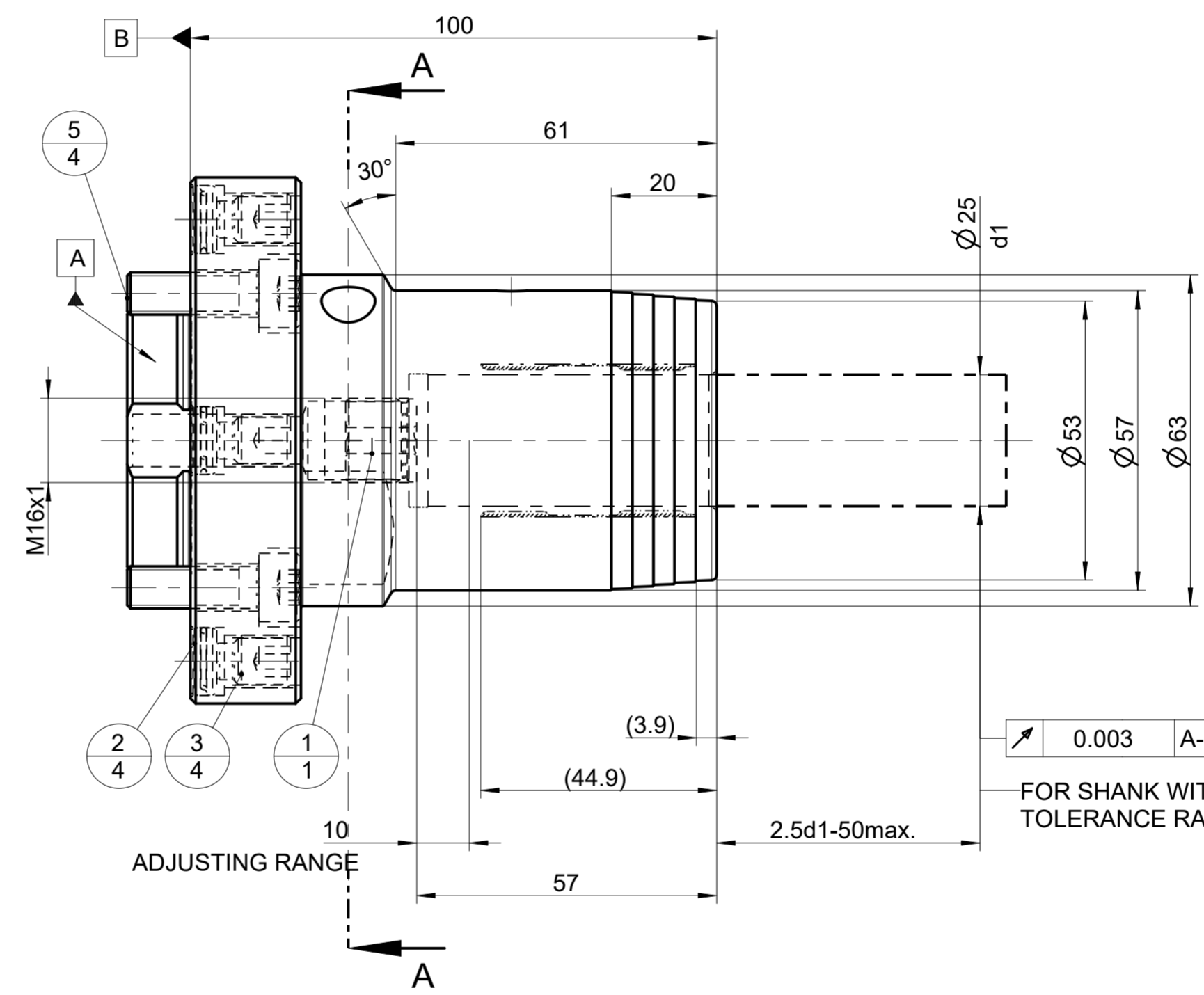
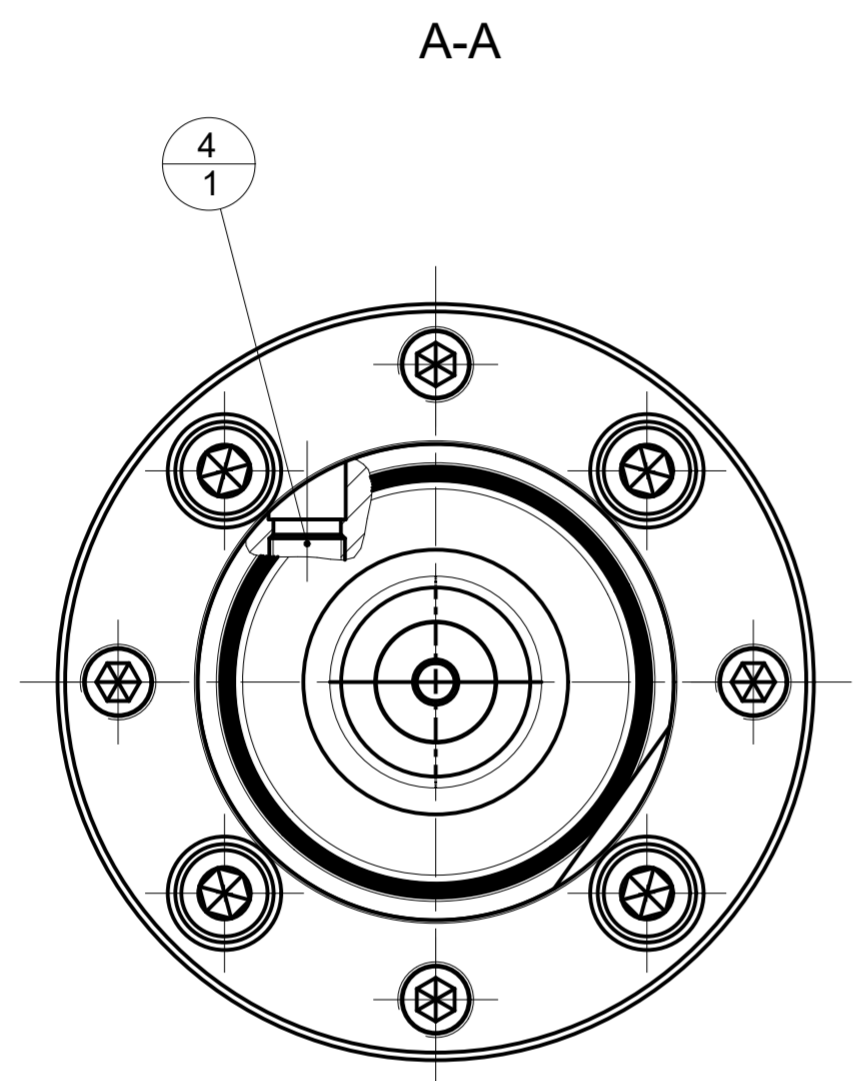


INDEX	CHANGES	DATE	NAME

MODULE 100  
MN 5000-34



0.003 A-B  
FOR SHANK WITH  
TOLERANCE RANGE h6

PART	TYP	QUAN.	UT	MATERIAL NUMBER	DESCRIPTION	TECHNICAL SPECIFICATION	CUSTOMER NUMBER
5	4			10003637	SOCKET HEAD SCREW	ISO 4762-M8X25-12.9	
4	1			10007041	THREADED PIN	S.ISO 4026-M10X1X12-45H	
3	4			10075100	THREADED PIN	M10X1X14-45H-KLF	
2	4			10075116	THRUST PAD	Ø12.8X5	
1	1			30252544	STOP SCREW	M16X1 SW5	

BALANCE GRADE PER DIN ISO 21940-11  
G 2.5 / 16000 MIN <sup>-1</sup>  
MASS  
APPROX. 2.8 kg

<b>MAPAL</b> FABRIK FUER PRAEZISIONSWERKZEUGE DR. KRESS KG		TITLE <b>HYDROCHUCK</b>		FORMAT A2			
<small>ALL RIGHTS FOR THE INVENTIONS, KNOW-HOW, TECHNICAL SOLUTIONS AND DESIGNS SHOWN ON THE DRAWING ARE ENTITLED TO MAPAL ONLY. AS FAR AS MAPAL DID NOT REGISTER PROPERTY RIGHTS HEREUPON YET, MAPAL FORMALLY RESERVES THE RIGHT FOR THE REGISTRATION OF PROPERTY RIGHTS. THE DRAWING AS WELL AS THE MATTERS SHOWN ARE STRICTLY CONFIDENTIAL. REPRODUCTIONS MAY ONLY BE MADE FOR THE PURPOSE AGREED UPON. NEITHER THIS DRAWING NOR COPIES THEREOF MAY BE MADE ACCESSIBLE TO THIRD PARTIES. WITH THE DELIVERY OF THIS DRAWING NO RIGHT TO USE IT FOR ANY PURPOSE IS GRANTED. VIOLATIONS AGAINST THE OBLIGATIONS TO SECRECY AND USE RESTRICTIONS WILL BE PROSECUTED.</small>		<b>MAPAL</b> Präzisionswerkzeuge Dr. Kress KG	DATE OF ISSUE 2024-09-05	CREATED SMU	DOCUMENT 608137781-000-00-ED1	INDEX 00	
			DATE 2024-09-05	APPROVED BAR	MATERIAL NUMBER <b>30320046</b>	ORIGIN EHD	
		GENERAL TOLERANCE ISO 2768-FH SIZE ISO 14405-1	DIMENSIONS NOT SHOWN ARE MAPAL STANDARDS		SCALE 1:1	TECHNICAL SPECIFICATION MHC-MOD100-25-100-1-2-A	SHEET 1/1